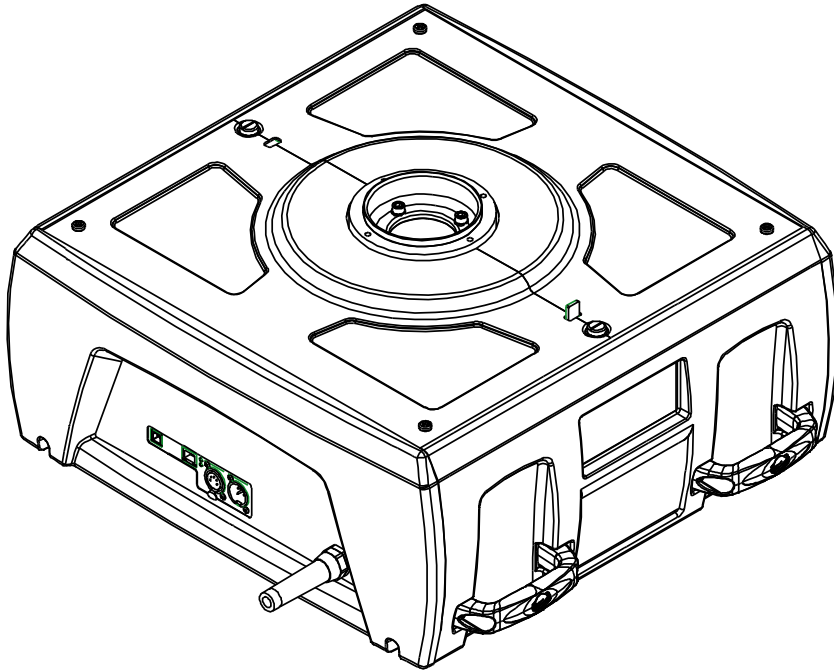


TZA002

REV.	DESCRIPTION	DATE	ENG	ECO #	APPR
1	CREATE DRAWING	21SEP07	KLB		MB
2	UPDATE VIEWS AND BOM BALLOONS	04DEC07	PP		MB
3	ADD ITEMS 21 THRU 33, ADD CHASSIS INTAKE FAN ASSEMBLY, ADD 4 EACH ITEM 12	21FEB08	PP		MB
4	ADD ITEMS 4 & 6, REMOVE REDUNDANT COVERS FROM BOM	17MAR08	PP		MB
5	HARDWARE CHANGES PER FACTORY RECCOMENDATIONS	17APR08	PP		MB
6	ADDITIONAL HARDWARE CHANGES	07MAY08	PP		MB
7	REVISION UPDATE ON ITEM 32	29MAY08	PP		MB

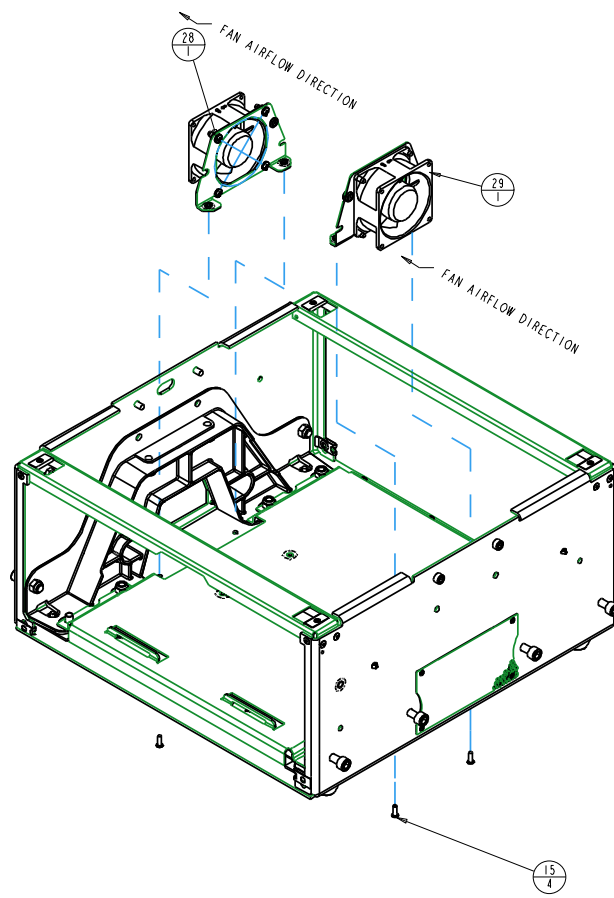
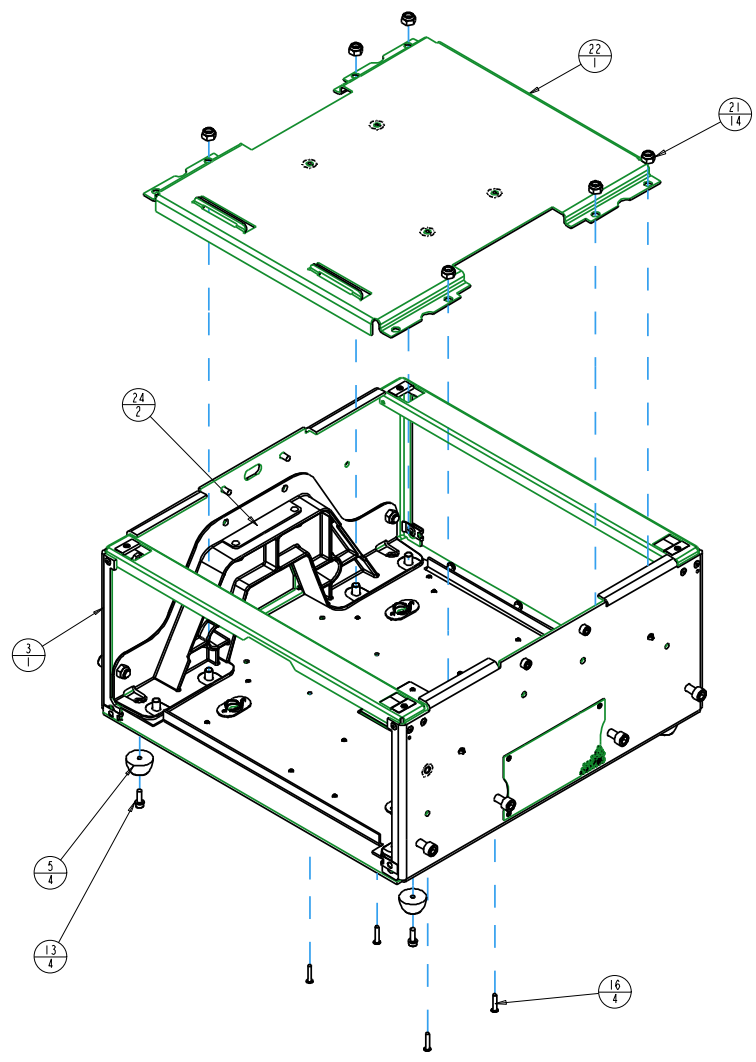


ITEM NO.	QTY.	FILENAME	PART NO.	REV	DESCRIPTION
36	1	CLIP_50_PUSH_ON_NY	90701271		CLIP, WIRE .50 DIA, PUSH MOUNT
34	1	TZA010	INTERNAL	3	POWER SUPPLY TRAY ASSEMBLY, PS2
33	1	TZA005	INTERNAL	7	POWER SUPPLY TRAY ASSEMBLY, PS1
32	1	TZA034	INTERNAL	4	PANEL ASSEMBLY, I/O, ELECTRONIC ENCLOSURE, MEA4
31	1	TZA030	INTERNAL	5	PANEL ASSEMBLY, FRONT, ELECT ENCL, MEA4
30	1	TWA081	INTERNAL	2	PAN BEARING COMPLETE SG
29	1	TWA811	INTERNAL	3	FAN ASSEMBLY, INTAKE
28	1	TWA065	INTERNAL	4	FAN ASSEMBLY, EXHAUST
27	1	TZA036	INTERNAL	2	CABLE, ROUTING, ASSEMBLY
26	1	TZA035	INTERNAL	7	ASSEMBLY, POWER SUPPLY, 40V
25	2	TZ454	99310478	-	LABEL, SIDE, TOP BOX, MEA4
24	2	DB250	99260452	-	SUPPORT, BEAM, CAST TOP BOX, DL2
23	2	TW201	99220033	-	COVER, SIDE, TOP BOX DL2
22	1	TZ111	99080345	-	PLATE, MOUNTING, POWER SUPPLY, MEA4
21	14	NUT_M8_LOCK_NY	90703105	-	NUT, M8-1.25, NYLOC
20	3	NUTM6KEP	91201206	-	NUT, M6 KEPS
19	8	SCREWM8AC30SS	91100830	-	SCREW, M8 SOCKET CAP 30 SS
18	6	SCREWM8AC16SSP	91100816	-	SCREW, M8 SOCKET CAP 16 SS W/PATCH
17	6	SCREWM6AC16SSP	91100616	-	SCREW, M6 SOCKET CAP 16 SS W/PATCH
16	4	SCREWM6AC12SSP	91100612	-	SCREW, M6 SOCKET CAP 12 SS W/PATCH
15	4	SCREWM4AB20BZ	91010420	-	SCREW, M4 BUTTON 20 BZ W/PATCH
14	4	SCREWM4AB12BZ	91010412	-	SCREW, M4 BUTTON 12 BZ W/PATCH
13	4	SCREWM5AC16W-BZ	91000516	-	SCREW, M5 SOCKET CAP 16 BZ SEMS
12	2	SCREWM4AC06W-BZ	91000406	-	SCREW, M4 SOCKET CAP 06 BZ SEMS
11	4	SW214	90720005	A	HANDLE, SMALL W/ LOGO
10	4	SCREW6-19PP380BTPE-BZ	90709117	-	SCREW, 6-19 PHIL PAN PLASTITE 3/8 BZ
9	4	SCREW10-14PP380TL-SZ	90709124	-	SCREW, 10-14 PHIL PAN 3/8 PLASTITE
8	8	WASHER318.500.040	90706101	-	WASHER, .040 X .318 ID X .500 OD
7	2	TW348	90702272	-	STANDOFF, 1/2 HEX, M8, FF 3.937L
6	1	CLIP_75_PUSH_ON_NY	90701358	-	CLIP, WIRE .75 DIA, PUSH MOUNT
5	4	RUBBER_FOOT	90410089	-	FOOT, RUBBER STG/NH LONG
4	1	DB512	80260015	-	FILTER, INTAKE TOP BOX DL2
3	1	TWA009	80110041	A	CHASSIS ASSY, TOP BOX MEA1
2	2	DBA024	80110035	D	COVER, ASSY UPPER, TOP BOX DL2
1	2	DB306	80071851	B	STUD, PANEL RETAINER, DL2

UNLESS OTHERWISE SPECIFIED: RELEASE DATE: CE: High End 2105 GRACY FARMS LANE  
 DIMENSIONAL TOLERANCES: ENG: MIKE BELL OA: AUSTIN, TEXAS 78158  
 0 PLACE DECIMAL = ±0.38 ME: DRW: PETE PHILLIPS (512) 836-2242  
 1 PLACE DECIMAL = ±0.25 MEG: FAK (512) 832-4128  
 2 PLACE DECIMALS = ±0.13 ANGLS = ±0.5 DESCRIPTION: ELECTRONICS ASSEMBLY, COMPLETE, MEA4  
 FOR PAINTED PARTS REFER TO ENG. SPEC. MANUAL W1-0592 MATERIAL: CHARTED FINISH: NONE  
 ALL COMPONENTS, MATERIALS AND FINISHES TO BE RoHS COMPLIANT

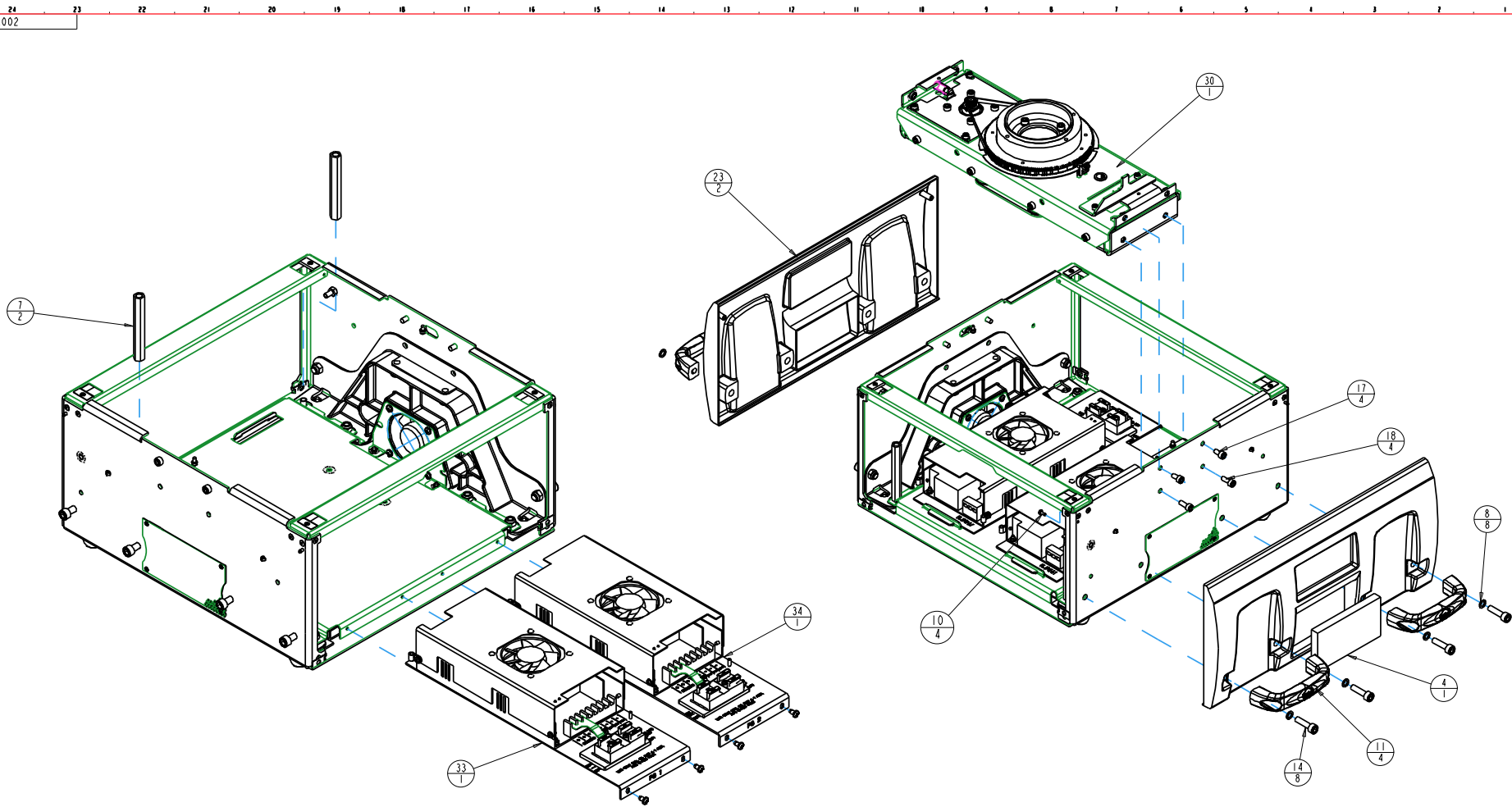
MIN. DRAFT INTERPRET DIMENSIONS PER ASME Y14.5M-1994 THIRD ANGLE PROJECTION SI METRIC A1 PART NO. INTERNAL TZA002 DRAWING NO. 7  
 THICKNESS DO NOT SCALE SCALE: 0.160 SHEET: 1 OF 5  
 VOLUME

PROPRIETARY NOTICE: THIS DOCUMENT CONTAINS CONFIDENTIAL AND PROPRIETARY INFORMATION OF HIGH END SYSTEMS INC., (ALSO DBA LIGHTWAVE RESEARCH) AND IS GIVEN TO THE RECEIVER IN CONFIDENCE. THE RECEIVER ACCEPTS AND AGREES THAT, EXCEPT AS AUTHORIZED BY HIGH END SYSTEMS, THE RECEIVER WILL NOT PERMIT THE USE OF THE DOCUMENT OR ANY COPY THEREOF OR THE INFORMATION THEREIN, WILL NOT COPY OR PERMIT COPYING THE DOCUMENT OR THE INFORMATION THEREIN, AND WILL UPON COMPLETION OF THE NEED TO RETURN THE DOCUMENT, OR UPON DEMAND, RETURN THE DOCUMENT WITHOUT RETAINING ANY OF THE INFORMATION CONTAINED THEREIN IN ANY FORM WHATSOEVER.



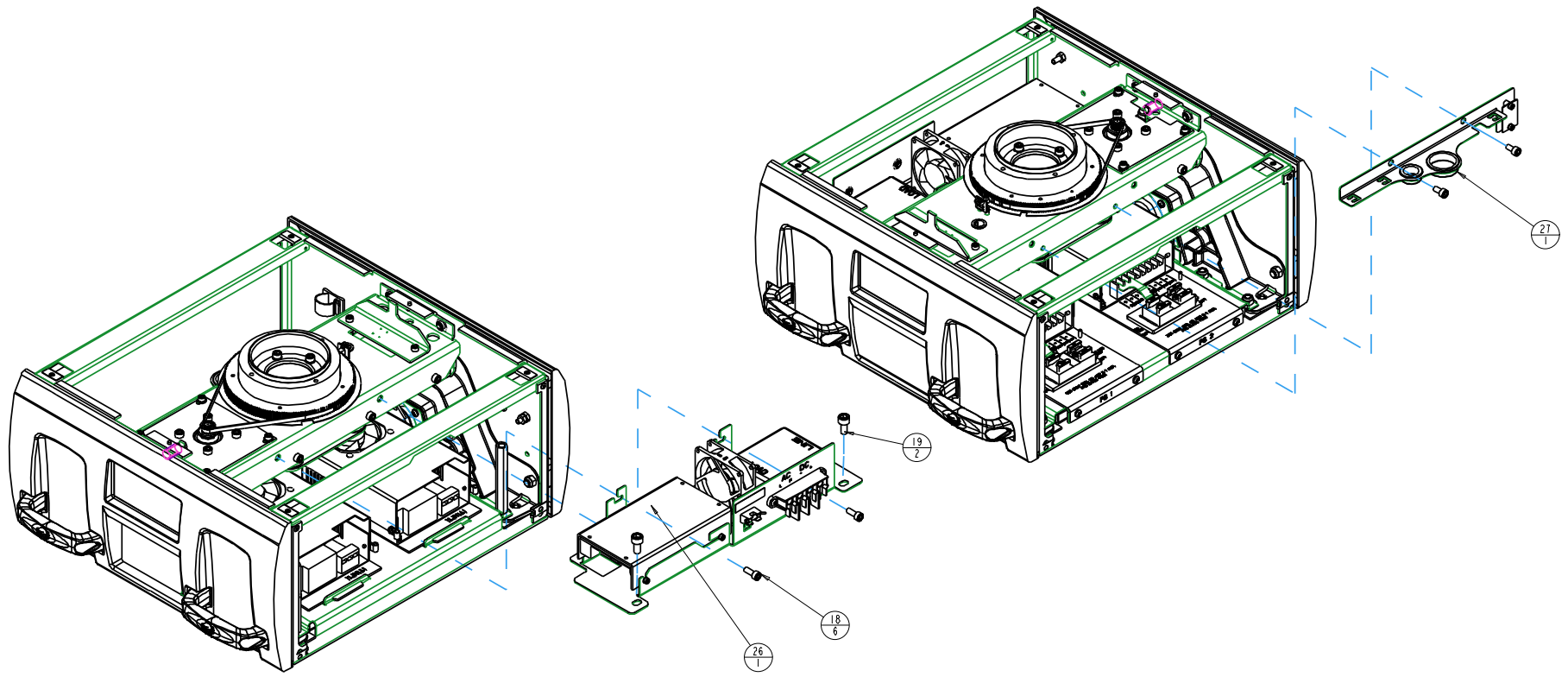
**PROPRIETARY NOTICE:**  
 THIS DOCUMENT CONTAINS CONFIDENTIAL AND PROPRIETARY INFORMATION OF HIGH END SYSTEMS INC., (ALSO DBA LIGHTWAVE RESEARCH) AND IS GIVEN TO THE RECEIVER IN CONFIDENCE. THE RECEIVER ACCEPTS AND AGREES THAT, EXCEPT AS AUTHORIZED BY HIGH END SYSTEMS, THE RECEIVER WILL NOT PERMIT THE USE OF THE DOCUMENT OR ANY COPY THEREOF OR THE INFORMATION THEREIN, WILL NOT COPY OR PERMIT COPYING THE DOCUMENT OR THE INFORMATION THEREIN, AND WILL UPON COMPLETION OF THE NEED TO RETAIN THE DOCUMENT, OR UPON DEMAND, RETURN THE DOCUMENT WITHOUT RETAINING ANY OF THE INFORMATION CONTAINED THEREIN IN ANY FORM WHATSOEVER.

UNLESS OTHERWISE SPECIFIED		RELEASE DATE:	CE:	High End 2105 GRACY FARMS LANE AUSTIN, TEXAS 78158 (512) 836-2242 FAX (512) 832-4128 http://www.highend.com	
DIMENSIONAL TOLERANCES: 0 PLACE DECIMAL = ±0.38 1 PLACE DECIMAL = ±0.25 2 PLACE DECIMALS = ±0.13 ANGLES = ±0.5°		ENG: MIKE BELL	QA:		
FOR PAINTED PARTS REFER TO ENG. SPEC. MANUAL WI-0592		MATERIAL:	DRW: PETE PHILLIPS	DESCRIPTION: ELECTRONICS ASSEMBLY, COMPLETE, ME4	
ALL COMPONENTS, MATERIALS AND FINISHES TO BE RoHS COMPLIANT		FINISH:	NONE		
MIN. DRAFT	MIN. RADIUS	FLATNESS	THICKNESS	VOLUME	INTERPRET DIMENSIONS PER ASME Y14.5M-1994 THIRD ANGLE PROJECTION DIMENSIONS ARE IN MILLIMETERS
PART NO. <b>INTERNAL TZA002</b>			DRAWING NO. <b>7</b>		
DO NOT SCALE			SCALE: 0.160	SHEET: 2 OF 5	



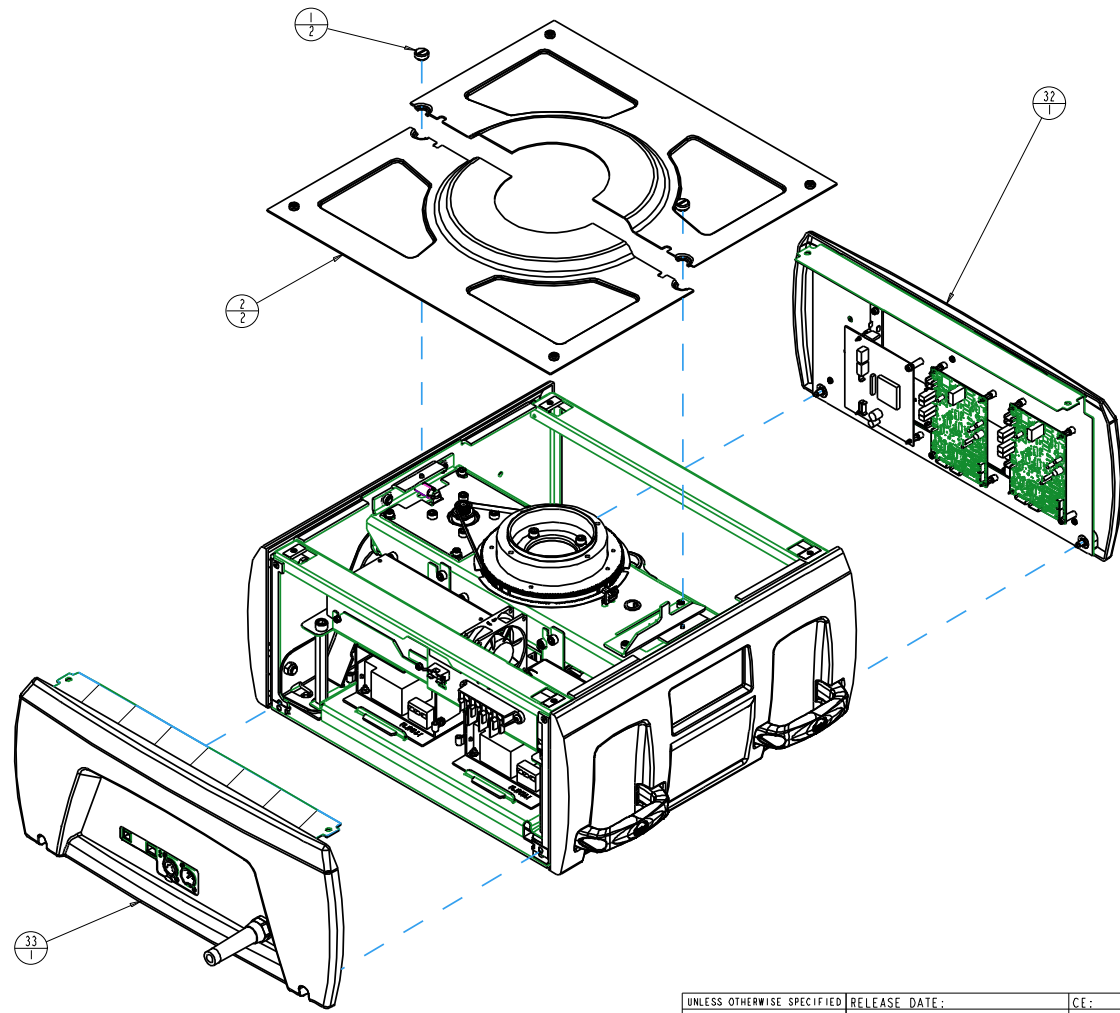
**PROPRIETARY NOTICE:**  
 THIS DOCUMENT CONTAINS CONFIDENTIAL AND PROPRIETARY INFORMATION OF HIGH END SYSTEMS INC., (ALSO DBA LIGHTWAVE RESEARCH) AND IS GIVEN TO THE RECEIVER IN CONFIDENCE. THE RECEIVER ACCEPTS AND AGREES THAT, EXCEPT AS AUTHORIZED BY HIGH END SYSTEMS, THE RECEIVER WILL NOT PERMIT THE USE OF THE DOCUMENT OR ANY COPY THEREOF OR THE INFORMATION THEREIN, WILL NOT COPY OR PERMIT COPYING THE DOCUMENT OR THE INFORMATION THEREIN, AND WILL UPON COMPLETION OF THE NEED TO RETAIN THE DOCUMENT, OR UPON DEMAND, RETURN THE DOCUMENT WITHOUT RETAINING ANY OF THE INFORMATION CONTAINED THEREIN IN ANY FORM WHATSOEVER.

UNLESS OTHERWISE SPECIFIED	RELEASE DATE:	CE:	2105 GRACY FARMS LANE AUSTIN, TEXAS 78158 (512) 836-2242 FAX (512) 832-4128 ***** <a href="http://www.highend.com">http://www.highend.com</a>	LIGHTWAVE RESEARCH
DIMENSIONAL TOLERANCES:	ENG: MIKE BELL	QA:		
0 PLACE DECIMAL = ±0.38	ME:	DRW: PETE PHILLIPS		
1 PLACE DECIMAL = ±0.25	MEG:			
2 PLACE DECIMALS = ±0.13	DESCRIPTION:			
ANGLES = ±0.5°	ELECTRONICS ASSEMBLY, COMPLETE, ME4			
FOR PAINTED PARTS REFER TO	MATERIAL:	FINISH:		
ENG. SPEC. MANUAL WI-0592	CHARTED	NONE		
ALL COMPONENTS, MATERIALS AND	INTERPRET DIMENSIONS PER	PART NO.	DRAWING NO.	REV.
FINISHES TO BE RoHS COMPLIANT	ASME Y14.5M-1994	INTERNAL	TZA002	7
	THIRD ANGLE PROJECTION			
	DIMENSIONS ARE IN MILLIMETERS			
MIN. DRAFT		DO NOT SCALE	SCALE: 0.160	SHEET: 3 OF 5
MIN. RADIUS				
FLATNESS				
FINISHES				
VOLUME				




**PROPRIETARY NOTICE:**  
 THIS DOCUMENT CONTAINS CONFIDENTIAL AND PROPRIETARY INFORMATION OF HIGH END SYSTEMS INC., (ALSO DBA LIGHTWAVE RESEARCH) AND IS GIVEN TO THE RECEIVER IN CONFIDENCE. THE RECEIVER ACCEPTS AND AGREES THAT, EXCEPT AS AUTHORIZED BY HIGH END SYSTEMS, THE RECEIVER WILL NOT PERMIT THE USE OF THE DOCUMENT OR ANY COPY THEREOF OR THE INFORMATION THEREIN, WILL NOT COPY OR PERMIT COPYING THE DOCUMENT WILL NOT DISCLOSE TO OTHERS EITHER THE DOCUMENT OR THE INFORMATION THEREIN, AND WILL UPON COMPLETION OF THE NEED TO RETURN THE DOCUMENT, OR UPON DEMAND, RETURN THE DOCUMENT WITHOUT RETAINING ANY OF THE INFORMATION CONTAINED THEREIN IN ANY FORM WHATSOEVER.

UNLESS OTHERWISE SPECIFIED		RELEASE DATE:	CE:	2105 GRACY FARMS LANE AUSTIN, TEXAS 78158 (512) 836-2242 FAX (512) 832-4128 ***** <a href="http://www.highend.com">http://www.highend.com</a>	LIGHTWAVE RESEARCH
DIMENSIONAL TOLERANCES: 0 PLACE DECIMAL = ±0.38 1 PLACE DECIMAL = ±0.25 2 PLACE DECIMALS = ±0.13 ANGLES = ±0.5°		ENG: MIKE BELL	QA:		
FOR PAINTED PARTS REFER TO ENG. SPEC. MANUAL WI-0592		MATERIAL:	DRW: PETE PHILLIPS	DESCRIPTION: ELECTRONICS ASSEMBLY, COMPLETE, ME4	
ALL COMPONENTS, MATERIALS AND FINISHES TO BE RoHS COMPLIANT		FINISH:	NONE		
MIN. DRAFT MIN. RADIUS FLATNESS THICKNESS VOLUME	INTERPRET DIMENSIONS PER ASME Y14.5M-1994 THIRD ANGLE PROJECTION DIMENSIONS ARE IN MILLIMETERS	SI METRIC <b>A1</b>	PART NO. <b>INTERNAL TZA002</b>	DRAWING NO. <b>7</b>	REV. <b>7</b>
DO NOT SCALE			SCALE: 0.160	SHEET: 4 OF 5	



**PROPRIETARY NOTICE:**  
 THIS DOCUMENT CONTAINS CONFIDENTIAL AND PROPRIETARY INFORMATION OF HIGH END SYSTEMS INC., (ALSO DBA LIGHTWAVE RESEARCH) AND IS GIVEN TO THE RECEIVER IN CONFIDENCE. THE RECEIVER ACCEPTS AND AGREES THAT, EXCEPT AS AUTHORIZED BY HIGH END SYSTEMS, THE RECEIVER WILL NOT PERMIT THE USE OF THE DOCUMENT OR ANY COPY THEREOF OR THE INFORMATION THEREIN, WILL NOT COPY OR PERMIT COPYING THE DOCUMENT OR THE INFORMATION THEREIN, AND WILL UPON COMPLETION OF THE NEED TO RETAIN THE DOCUMENT, OR UPON DEMAND, RETURN THE DOCUMENT WITHOUT RETAINING ANY OF THE INFORMATION CONTAINED THEREIN IN ANY FORM WHATSOEVER.

UNLESS OTHERWISE SPECIFIED		RELEASE DATE:	CE:	High End 2105 GRACY FARMS LANE AUSTIN, TEXAS 78158 (512) 836-2242 FAX (512) 832-4128 ***** <a href="http://www.highend.com">http://www.highend.com</a>	 LIGHTWAVE RESEARCH
DIMENSIONAL TOLERANCES: 0 PLACE DECIMAL = ±0.38 1 PLACE DECIMAL = ±0.25 2 PLACE DECIMALS = ±0.13 ANGLES = ±0.5°		ENG: MIKE BELL	QA:		
FOR PAINTED PARTS REFER TO ENG. SPEC. MANUAL WI-0592		ME:	DRW: PETE PHILLIPS	DESCRIPTION: ELECTRONICS ASSEMBLY, COMPLETE, ME4	
ALL COMPONENTS, MATERIALS AND FINISHES TO BE RoHS COMPLIANT		MATERIAL:	FINISH: NONE		
MIN. DRAFT MIN. RADIUS FLATNESS THICKNESS VOLUME	INTERPRET DIMENSIONS PER ASME Y14.5M-1994 THIRD ANGLE PROJECTION DIMENSIONS ARE IN MILLIMETERS	SI METRIC A1	PART NO. INTERNAL TZA002	DRAWING NO. TZA002	REV. 7
			DO NOT SCALE	SCALE: 0.160	SHEET: 5 OF 5